

Hardware - Software



URBAN
SECURITY



ACCESS
CONTROL



SPECIAL
PRODUCTS



SOFTWARE
SOLUTIONS

We make roads, cities, and
private entrances safer.



2024

CATALOGUE

CERTIFICATION



ISDP 10003

privacy by design - privacy by default

WHAT IS ISDP 10003 CERTIFICATION

It is a voluntary certification scheme, accredited by Accredia, to determine compliance with the GDPR. It provides the principles and control elements (Annex) for a complete assessment of the conformity of internal processes regarding the protection of personal data with particular reference to correct risk management.

WHAT IT CERTIFIES

SELEA products, both **Hardware** and **Software** (APP and TELEGRAM BOT included) have obtained the Certification of Conformity in Data Protection according to the European guidelines of the General Data Protection Regulation EU 2016/679. The Certificate was issued in compliance with the ISDP©10003:2018 requirements and control rules for the certification of treatment processes with regard to the assessment of respect for the fundamental rights of natural persons and the free circulation of data.

ADVANTAGES

The advantages of using Selea certified ISDP10003 GDPR 2016/679 products are numerous, such as:

- Accountability of the Controller according to 2016/679
- Compulsory impact analysis (DPIA) integration in the PA
- It contributes to the processing compliance with the GDPR and the correct integration in the drafting of the Data Protection Impact Assessment and Risk Analysis (DPIA) - art. 35 of EU Regulation/2016/679, mandatory for the Public Administration and the integration of secure, documented and standardized procedures in the data processing process.

CONFORMITY



DATA PROTECTION

Conformity guarantee

WHAT IS THE NDAA

The National Defense Authorization Act (NDAA) is a law that originated in the United States and came into force in 2018, which explicitly prohibits the acquisition or use of video surveillance and communications products and services that do not meet security requirements and **contain electronic components** that can covertly exchange data with unauthorized third parties. This law was introduced after some devices (such as cameras, routers, switches, etc.) were found to contain microchips that covertly transmitted sensitive data (in the backbone), bypassing all security systems (firewalls). Thus, the NDAA aims to ensure and strengthen national security and protect users from potential cyber security threats and leakage of sensitive data. While compliance with the NDAA is mandatory in the United States and not in Europe, it is spreading everywhere, especially in public and private security.

WHAT IT GUARANTEES

It is documented that all SELEA devices are NDAA compliant and specifically **hardware** products (cameras) that use only and exclusively electronic components (*microchips and other data processing devices*) manufactured by NDAA approved (i.e. not blacklisted) vendors, thus ensuring privacy and security.

ADVANTAGES

The advantages of using products that are NDAA compliant are:

- High protection against cyber-attacks (Cyber Security).
- Guarantee of no data leakage to unauthorized third parties.
- Contributes to GDPR compliance of processing, and proper integration in the drafting of Data Protection Impact Assessment and Risk Analysis (DPIA).
- Avoid having to replace all products if the European Union decides to adopt NDAA compliance by law.

Index

URBAN SECURITY

- TARGA **206**
- TARGA **706**
- TARGA **806**
- TARGA **760**
- TARGA **950**
- **CPS 6.5**
- **MVR**

ACCESS CONTROL

- **iZERO**
- TARGA **512**
- TARGA **504**
- **Qentry**

SPECIAL PRODUCTS

- **OCR BOX**
- TARGA **INOX**
- TARGA **706ILB**
- TARGA **SCANNER**



URBAN SECURITY



Products warranty
5 years



TARGA 206

ANPR camera
SINGLE-LANE

CERTIFIED

Privacy by Design
and Privacy by Default

ISDP 10003

NDAA
compliant



INTERNAL
MEMORY
8GB



SAVE
MONEY



DOUBLE
OPTICS



MEGAPIXEL
OCR



MEGAPIXEL
CONTEXT



SINGLE
LANE

Video surveillance camera with OCR algorithm for automatic reading of number plates with dual sensor: a 2 MP sensor for OCR reading of number plates + 5 MP colour sensor for capturing the context: solution adopted to ensure maximum accuracy in character recognition.

Suitable for checking road and urban safety both inside and outside the city circuit.

It features by high number plate reading accuracy, UNI 10772:2016 certified in class A with 100% accuracy on front, rear, two-line, motorcycle and moped number plates.

TARGA206 + CPS 6.5 is the ideal solution for those who want to create a complete number plate reading system on a small budget, because it combines the excellent performance of the camera with the powerful video analysis (Brand, Model, Type and Colour recognition) of the CPS software.



TARGA 706

ANPR camera
SINGLE-LANE

CERTIFIED

Privacy by Design
and Privacy by Default

ISDP 10003

NDAA
compliant



MULTIPLE VIDEO
ANALYSIS



DOUBLE
OPTICS



MEGAPIXEL
OCR



MEGAPIXEL
CONTEXT



SINGLE
LANE

Video surveillance camera for recognizing number plates and dangerous goods codes (KEMLER) **on a single lane**, but which can optionally be customized by inserting one or more of the following **video analysis algorithms**: **make and model, colour, class, wrong direction vehicles, prohibited transit (including mopeds/motorcycles), formation of queues, vehicle breakdown, smoke-fire and hemlet detection**.

Dual lens number plate reading camera: a 2 MP sensor for OCR reading with a 5-55 mm varifocal lens and a 2 MP **Sony Night Vision** colour sensor for capturing the context; solution adopted to ensure maximum accuracy in recognizing characters and vehicles (video analysis). This camera comes with **Speed estimation and direction of travel** built-in algorithms with an accuracy of more than 95%.

ISDP-10003 and UNI-10772 certified camera, NDAA compliant.



TARGA 806

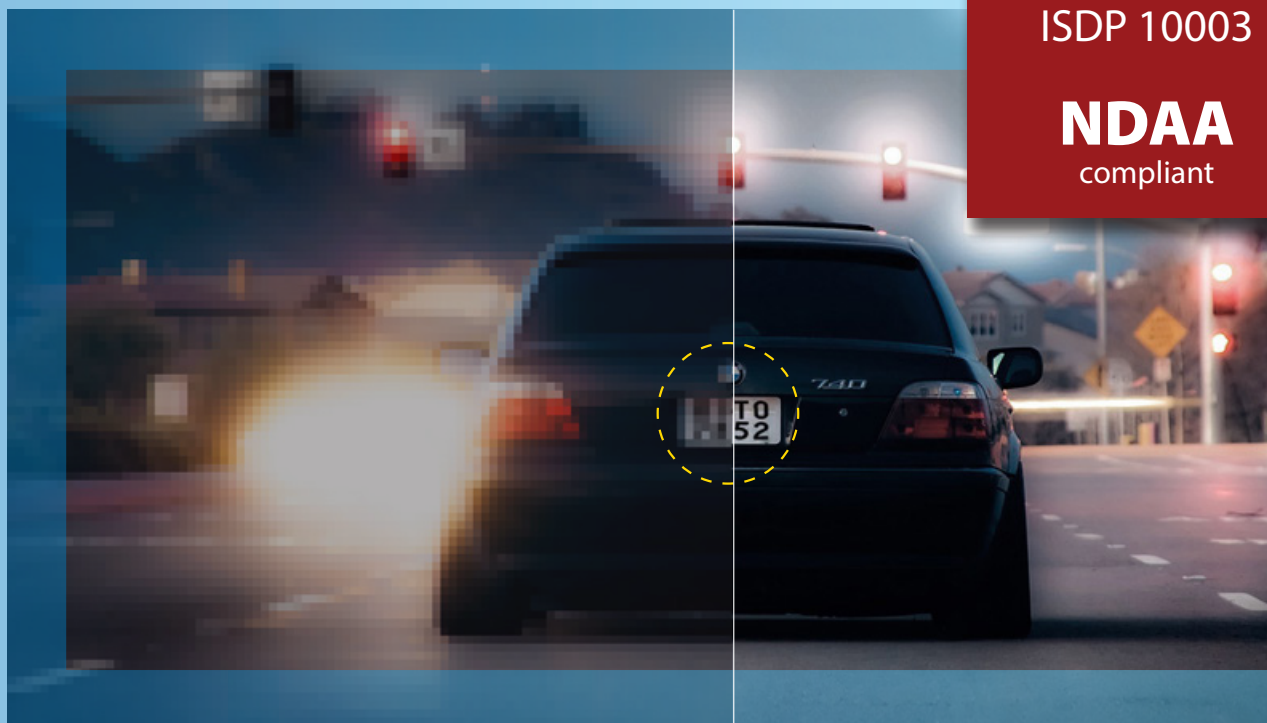
ANPR camera
SINGLE-LANE

CERTIFIED

Privacy by Design
and Privacy by Default

ISDP 10003

NDAA
compliant



MULTIPLE VIDEO
ANALYSIS



DOUBLE
OPTICS



MEGAPIXEL
OCR



MEGAPIXEL
CONTEXT



SINGLE
LANE

Video surveillance camera for recognizing number plates and dangerous goods codes (KEMLER) **on a single lane**, but which can optionally be customized by inserting one or more of the following **video analysis algorithms**: **make and model, colour, class, wrong direction vehicles, prohibited transit (including mopeds/motorcycles), formation of queues, vehicle breakdown, smoke-fire and helmet detection**.

Dual lens number plate reading camera: a 5 MP sensor for OCR reading with a 35 mm fixed lens and a 5 MP **Sony Night Vision** colour sensor for capturing the context; solution adopted to ensure maximum accuracy in recognizing characters and vehicles (video analysis). This camera comes with **Speed estimation and direction of travel** built-in algorithms with an accuracy of more than 95%.

ISDP-10003 and UNI-10772 certified camera, NDAA compliant.



TARGA 760

ANPR camera
DUAL-LANE

CERTIFIED

Privacy by Design
and Privacy by Default

ISDP 10003

NDAA
compliant



MULTIPLE VIDEO
ANALYSIS



DOUBLE
OPTICS



3.2
MEGAPIXEL
OCR



2
MEGAPIXEL
CONTEXT



DOUBLE
LANE

Video surveillance camera for recognizing number plates and dangerous goods codes (KEMLER) **on a dual lane**, but which can optionally be customized by inserting one or more of the following **video analysis algorithms**: **make and model, colour, class, wrong direction vehicles, prohibited transit (including mopeds/motorcycles), formation of queues, vehicle breakdown, smoke-fire and helmet detection**.

Dual lens number plate reading camera: a 3.2 MP sensor for OCR reading with a 12-40 mm varifocal lens and a 2 MP **Sony Night Vision** colour sensor for capturing the context; solution adopted to ensure maximum accuracy in recognizing characters and vehicles (video analysis). This camera comes with **Speed estimation and direction of travel** built-in algorithms with an accuracy of more than 95%.

ISDP-10003 and UNI-10772 certified camera, NDAA compliant.



TARGA 950

ANPR camera
DUAL-LANE

CERTIFIED

Privacy by Design
and Privacy by Default

ISDP 10003

NDAA
compliant



BUILT-IN

- **Context sensor**
Sony Night Vision 8 Mpx (4K)
- **Algorithms**
 - LPR recognition
 - ADR table recognition
 - Make & Model
 - Colour
 - Type of vehicle
 - Speed estimation
 - Direction of travel
 - Nationality
 - Vehicle breakdown
 - Smoke and fire
 - Hemlet detection



MULTIPLE VIDEO
ANALYSIS



DOUBLE
OPTICS



MEGAPIXEL
OCR



MEGAPIXEL
CONTEXT



DOUBLE
LANE

Video surveillance camera with **built-in multiple video analysis** for the recognition, on **dual lane**, of: **number plates (OCR) and dangerous goods codes (KEMLER-ONU), make and model, colour, class, nationality, wrong direction vehicles, prohibited transit (including mopeds/motorcycles), Speed estimation and direction of travel, formation of queues, vehicle breakdown, smoke-fire and hemlet detection.**

All video analytics operate simultaneously in real time on both lanes with very high accuracy (more than 95%).

Dual lens number plate reading camera: a 5 MP sensor for OCR reading with a 12-40 mm varifocal lens and a **8 MP (4K) Sony Night Vision** colour sensor for capturing the context; solution adopted to ensure maximum accuracy in recognizing characters and vehicles (video analysis). This camera comes with built-in algorithms with an accuracy of more than 95%.

ISDP-10003 and UNI-10772 certified camera, NDAA compliant.



MVR

Series for
Law Enforcement



VMS SOFTWARE

For VIDEO-RECORDING AND SURVEILLANCE



OPEN
PLATFORM



MULTI
USER



RADIO
COMMUNICATION



INTELLIGENT
SOFTWARE



Video-recording software, capable of managing Onvif IP - RTP/RTSP cameras. A simple and intuitive solution, designed for those who want to create a video surveillance system without too many frills. Easy to configure and use and it has complete functions such as viewing on multiple monitors, maps, alarm management, recovery of video footage etc... An actual control room for recording, viewing and communication.

MVR is a multi-user and multi-platform software capable of dividing the workload on multiple computers connected to the network, while operating as if it were a single server.

It runs as a service on Windows OS to remain separate from image viewing platforms thus avoiding system crashes.



CPS 6.5

MANAGEMENT SOFTWARE
FOR ANPR SYSTEMS

CERTIFIED

Privacy by Design
and Privacy by Default

ISDP 10003

SOFTWARE SOLUTION
FOR LOCAL POLICE
with no subscriptions



Management	Safety	Communication	Investigations	Analysis	Integration
<ul style="list-style-type: none"> • Users and permissions • Communications • Reporting • OCR cameras 	<ul style="list-style-type: none"> • Certification • Privacy by design • Encryption • Data and reporting 	<ul style="list-style-type: none"> • App. LTE Radio • Tablets and Cellphones • Joint intelligence • Alarms 	<ul style="list-style-type: none"> • Front companies • Search for accomplices • Destination Origin • Thefts 	<ul style="list-style-type: none"> • Intelligent Video • Statistics • Distribution • Traffic 	<ul style="list-style-type: none"> • Video-surveillance • OCR portals • SCNTT Data • AGID and PDND

ISDP10003 certification
PRIVACY by default - PRIVACY by design

Advanced software for managing license plates and the **most popular LPR cameras** (ANPR-OCR) on the market. A solution to make the work of the **Local Police** effective, in the area of investigations **and city and road safety**.

The solution is equipped with **intelligent functions** for traffic analysis, detection and interception of vehicles in violation, links to ministerial databases, localization and route display on graphical maps, and transmission of information to mobile devices.

The ideal solution, both for control and for those looking for a truly complete and high-performance solution for **investigation, law enforcement, prevention and repression of crimes purposes**: a field in which the CPS stands out from any other solution on the market, equipped as it is with the most advanced methods for analyzing and extrapolating information. Methods that allow it to perform rapid tree searches and extrapolate vehicles of a specific color, make, model, type, nationality, speed, direction, dummies, accomplices to crime, stolen cars, and much more.



CPS 6.5



The software communicates and interacts with popular video surveillance systems (such as Milestone, Genetec, Exacq, Qnap ...). It is also equipped with **intelligent video analysis algorithms**, which are useful for security operators to extrapolate, from images from Selea OCR cameras that do not have in-camera video analytics, additional information such as Make, Model, Type, Color of vehicles.

The entire Selea suite is **Privacy by Design and Privacy by Default certified**, guaranteeing the diligence with which the solution has been developed to protect data and in compliance with GDPR requirements.

WHAT MAKES IT UNIQUE



COST-EFFECTIVENESS

It is the only number plate management software, consistently updated, that does not require subscriptions. Excellent time and money savings.



UX/UI

It analyses, aggregates and displays data in elegant and informative graphic formats: useful elements for traffic analysis, road and urban safety.



ALGORITHMS

It is the only one of its kind to integrate intelligent video analysis algorithms that extract useful information for investigations from the Selea cameras images.



ADVANCED FEATURES

It uses advanced methods for meticulous search, extrapolation and identification of vehicles with filter functions that are simple and intuitive to use.



ACCESS CONTROL



Products warranty

5 years



iZero

ACCESS-CONTROL

ANPR camera
SINGLE-LANE

CERTIFIED

Privacy by Design
and Privacy by Default

ISDP 10003

NDAA
compliant



- Parking
- Industrial
- Hotel
- Residence
- Camping



802.3AF
POE



1A-30VDC
RELAY



RS232-485
WIEGAND



2
MEGAPIXEL
OCR

TCP/IP number plate reading camera (ANPR) available both in the **column** version and in the compact **box** version. This product is ideal for low-speed vehicles access control (up to 20 km/h), suitable for a reliable solution and accuracy in reading the characters (99.8%) even with critical number plates (i.e. dirty, deteriorated, damaged...).

iZero is simple to install, as it does not require lens adjustments. The iZero FULL version is complete with internal memory and interface for integration with the most common access control systems such as **Skidata, Faac, Hub Parking, Siemens, Came, Fadini**, and various others.



TARGA 512

ACCESS - CONTROL

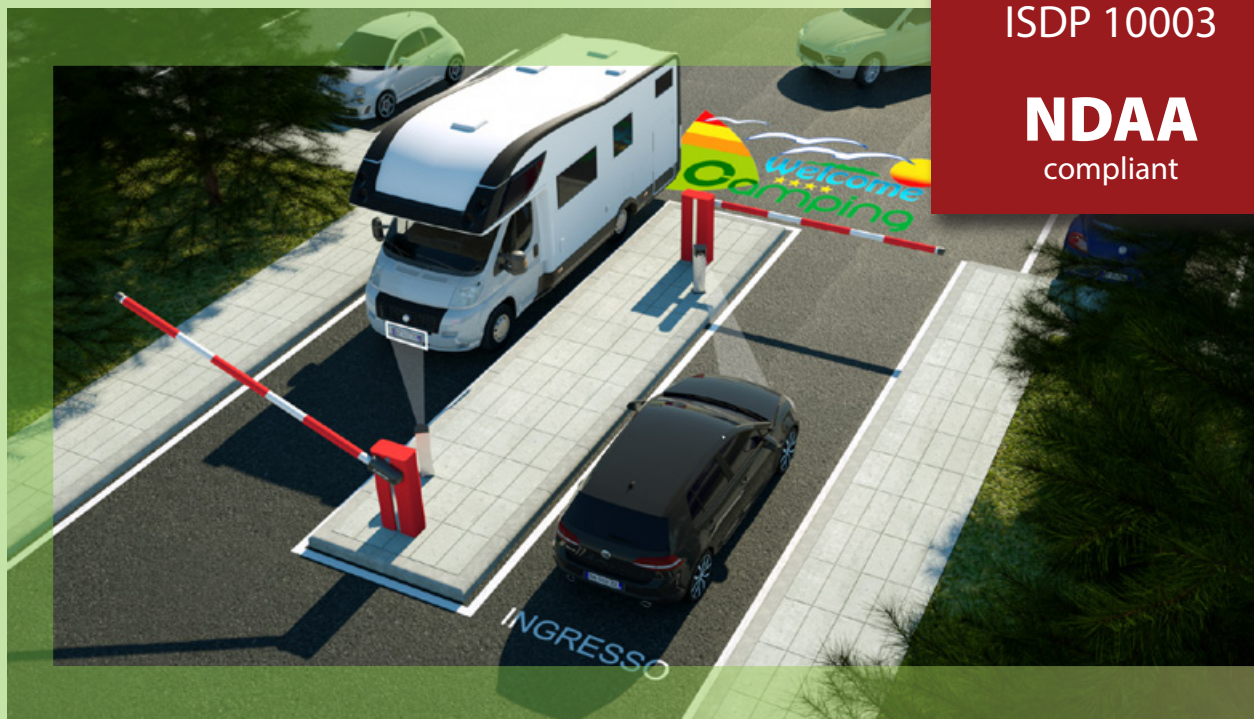
ANPR camera
SINGLE-LANE

CERTIFIED

Privacy by Design
and Privacy by Default

ISDP 10003

NDAA
compliant



INTERCHANGEABLE
LENS



1A-30VDC
RELAY



RS232-485
WIEGAND



2
MEGAPIXEL
OCR

Number plate reading TCP/IP camera (ANPR) for access control of low-speed vehicles (up to 40Km/h) suitable for a reliable solution with **high reading accuracy** (99.8%) of the characters, even with critical plates (*i.e. dirty, deteriorated, damaged...*).

The camera is simple to install as it does not require lens adjustments and is equipped with a support bracket for both wall and pole installation.

It comes with internal memory and interface for integration with the most common access control systems such as **Skidata, Faac, Hub Parking, Siemens, Came, Fadini**, and various others.

Parking - Industrial - Hotel - Residence - Camping



TARGA 504

A C C E S S - C O N T R O L

ANPR camera
SINGLE-LANE

CERTIFIED

Privacy by Design
and Privacy by Default

ISDP 10003

NDAA
compliant



VARIFOCAL
LENS



1A- 30VDC
RELAY



RS232-485
WIEGAND



DOUBLE
OPTICS

Number plate reading TCP/IP camera (ANPR) for access control of low-speed vehicles (up to 60Km/h) suitable for a highly reliable solution with **high reading accuracy** (99.8%) of characters, even with critical *plates (i.e. dirty, deteriorated, damaged...)*.

The camera is equipped with an adjustable 5-55 mm lens (10x zoom) and, optionally, also with a 5 MP colour sensor for colour filming of the context.

It comes with a support bracket for both wall and pole installation. It comes with internal memory and interface for integration with the most common access control systems such as **Skidata, Faac, Hub Parking, Siemens, Came, Fadini**, and various others.

Parking - Industrial - Hotel - Residence - Camping

QENTRY

ACCESS CONTROL SOFTWARE SOLUTION



Management

Solution for managing private and public or residential parking facilities and their users.

Integration

In addition to license plate reading cameras, the software also offers the possibility of integrating other access control devices

Permits

Permit conditions can be set on a period and on a hourly basis for each user.

Checks

Displays the number of vehicles in the parking lot and the number of available spaces.

Control

Multi-user solution that allows operation from a single or multiple locations using a simple browser.

Software designed for at managing public and private parking spaces, as a hourly or paid service, corporate and/or residential parking lots. Qentry is a web-based application that facilitates the management and access control of vehicles even remotely in multi-user mode.

Useful solution for those who want to implement a surveillance and access administration system, with features for managing permits, schedules, tariffs, management of parking spaces granted to the family group, customers of campings, residence, hotels, and companies.

Qentry is also capable of handling special categories of vehicles such as Ambulances, Law Enforcement, vendors, or special customers (VIPs), that can enter without any restrictions.



SPECIAL PRODUCTS



TARGA Inox

AISI316L CERTIFIED HOUSING FOR CORROSIVE ENVIRONMENTS



DANGEROUS
GOODS



ANTI
CORROSION



ANTI
DIRT



TRIPLE
AXIS



PRODUCT
AVAILABLE ON
REQUEST AND FOR
SPECIAL PROJECTS

TARGA INOX is an **AISI316L certified** anti-corrosion stainless steel housing unit, which houses the number plate reading cameras (ANPR) and ADR tables of dangerous goods (KEMLER-ONU) model Targa 704, 750 and 805. The stainless steel housing is recommended in all those applications where **chemical agents** are critical and determining elements for the life of the camera itself, such as, for example, in the maritime sector, in tunnels or in the chemical industry.

The device can be equipped with the "**clean glass**" protection system which is useful for reducing the deposit of dust on the glass in the environment: elements particularly present inside **tunnels**. This solution saves time and money on camera maintenance in tunnels.

The housing is equipped with a special joint that allows for orientating the camera on a third axis, thanks to which perfect adjustment is obtained even when installed on vaulted ceilings.



TARGA 706ILB

SPECIALIZED IN THE RECOGNITION OF CONTAINER CODES

CONTAINER CODES
READING

CERTIFIED

Privacy by Design
and Privacy by Default

ISDP 10003

NDAA
compliant



HIGH
ACCURACY



ILU-BIC
CODES



DOUBLE
SENSOR

TCP/IP camera specialized in reading the ILU-BIC rear codes of containers, with a demonstrated accuracy of 99.8% on millions of containers read. The camera is capable of recognizing the code without the aid of external synchronization devices.

The camera can optionally be equipped with a second 2 MP colour sensor for capturing the context.

TARGA704ILB has proved to be very useful for simplifying the goods traceability process, automating the container loading/unloading process, replacing the manual transcription of data, in an automated process free from errors. The product ideal for the port and airport sector.



TARGA Scanner

**MOBILE
ANPR CAMERA**

CERTIFIED

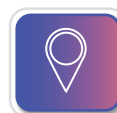
Privacy by Design
and Privacy by Default

ISDP 10003

NDAA
compliant



NIGHT
& DAY



GEO
LOCATION



RADIO
COMMUNICATION



DOUBLE
ROW



Solution including:

- 1 - LPR camera
- 2 - 4 mt Ethernet cable
- 3 - Suction cup mount
- 4 - Cigarette lighter power cable
- 5 - Suitcase

Solution for the detection of traffic violations in full freedom of movement, while working outside. An LPR device that can be used indifferently on the vehicle (moving); portable location (tripod) or fixed locations (pole).

TARGA SCANNER is an operations center, capable of directly consulting Ministerial databases while on the move, which makes security control work effective even when on outside service.

The solution integrates with the most popular law enforcement mobile radio systems, such as Hytera and Motorola, allowing voice alerts and real-time images to be received on these terminals. TARGA SCANNER comes complete with all the accessories required for its use.



OCR BOX

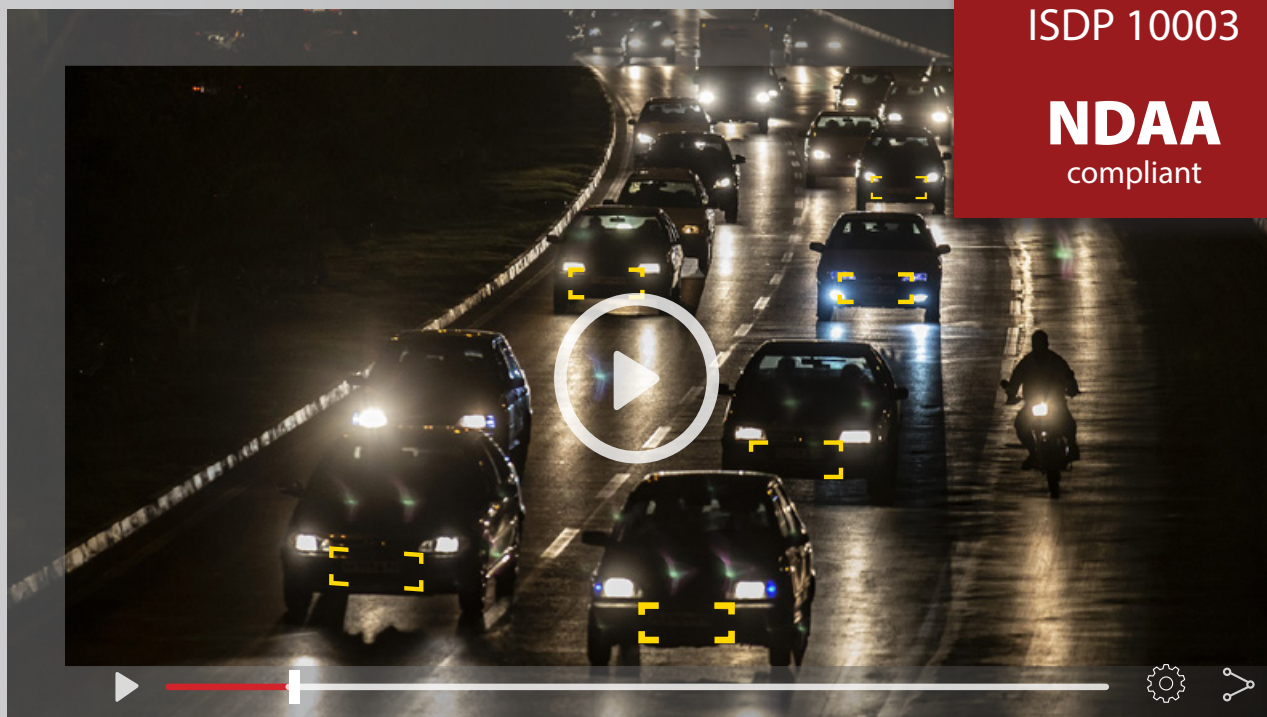
VIDEO ANALYSIS
BOX

CERTIFIED

Privacy by Design
and Privacy by Default

ISDP 10003

NDAA
compliant



Solution including:

- 1 - OCR BOX
- 2 - CPS software with MEM algorithm
- 3 - 16 GB USB memory
- 4 - Ethernet connection cable
- 5 - Power supply for OCR BOX

OCR BOX

Solution that integrates an OCR algorithm useful for extracting license plate numbers of vehicles present in a 16:9 video. This feature saves time by eliminating the need to spend days watching video surveillance footage to track down a suspicious vehicle.

The license plate numbers recognized by the OCR BOX are stored in the CPS software, through which the **make and model** of the vehicle can also be detected.

OCR BOX operates on MKV and AVI movies in Mpeg4 or H264 format present on the USB storage and has a LAN port for transferring videos from the PC to the provided USB memory stick.

The maximum video resolution supported by the OCRBOX is FULL-HD (1920x1080), and license plate reading is possible only if the size of the license plate is greater than 18 pixels (vertically) and the image is well defined, without blurring or effects that make the license plate unreadable to the naked eye.

About us

SELEA is specialized in the manufacture of number plate reading solutions, both for vehicle access control and for territorial security and traffic control. All of our products are developed and manufactured entirely in Italy. This means that our customers benefit from continuous and comprehensive technical support.

Selea Srl

Via Aldo Moro, 69
46019 Cicognara (MN)
Italy
VAT 01811290202
Tel +39 0375 88.90.91
Fax +39 0375 88.90.80
www.selea.com
infocom@selea.com

- HARDWARE MANUFACTURING
- SOFTWARE DEVELOPMENT
- IN-HOUSE RESEARCH & DEVELOPMENT
- 100% MADE in ITALY by SELEA

made initaly

