

ACCESS CONTROL PARKING

SELEA cameras compared to from other brands.

We are **often** asked to send a **comparison table** highlighting the technical differences between **SELEA cameras** and those of **other brands** on the market.

And there is a reason.

Even the most experienced people in the field of licence plate reading **have difficulty** understanding the real differences between one product and another, on the basis of the technical characteristics described in the products datasheets.

The only way to understand the difference between a product of one brand and another is to **compare the real images** on the road and the related vehicle recognition **data** (*number plate, make, model, colour etc.*) in **critical conditions** - *such as dirty, deteriorated, half-covered number plates, etc.* - **especially at night.**

What we show you in this document are the performances offered by SELEA access control cameras.

COMPARING CAMERAS

CRITICAL CONDITIONS

It is easy to read clean number plates in summer in broad daylight. It is much more difficult **at night**, especially **in winter** when the plates are dirty and in complete darkness. The matter becomes more complicated if the plates are also deteriorated, deformed or half-hidden. it is precisely when faced with such **critical conditions** that the real **differences between one brand of camera and another** become clear and evident.

That is why for us **PRECISION IS EVERYTHING.**

WE WANT TO PROVE IT TO YOU,
through images that are worth more than 1000 words.

** Some characters have been hidden for privacy reasons. We assure that they have been correctly recognised.*

DIRTY PLATE



DIRTY PLATE



DIRTY PLATE



DIRTY PLATE



DIRTY PLATE



DETERIORATED NUMBER PLATE



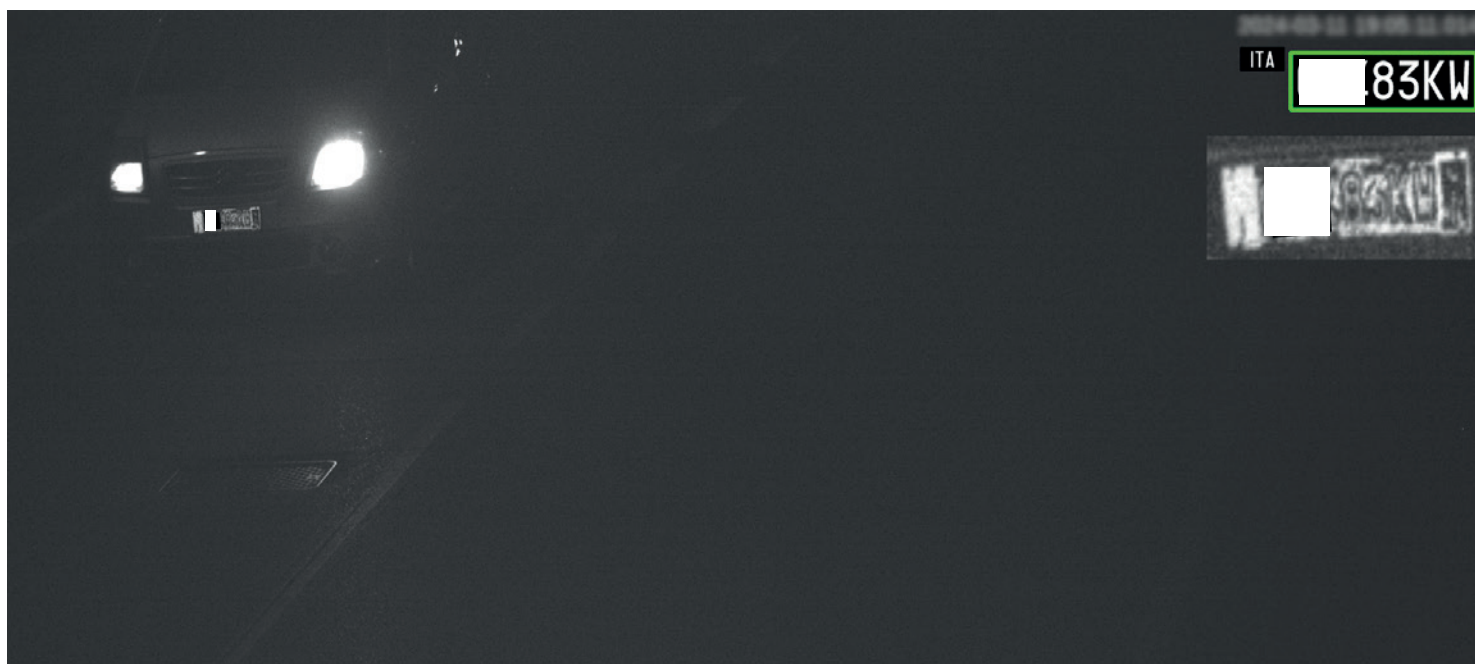
DETERIORATED NUMBER PLATE



DETERIORATED NUMBER PLATE



DETERIORATED NUMBER PLATE



PARTIALLY COVERED PLATE



PARTIALLY COVERED PLATE



PARTIALLY COVERED PLATE



ANGULAR PLATE



ANGULAR PLATE



ANGULAR PLATE



ANGULAR PLATE



DEFORMED NUMBER PLATE



DEFORMED AND DIRTY NUMBER PLATE



About us

Selea is a manufacturer specialising in licence plate reading solutions, both for vehicle **access control** and for **territorial security** and **road control**. Each product is fully developed and manufactured by Selea in Italy, which means that the customer benefits from comprehensive and ongoing technical support.

Selea Srl

Via Aldo Moro, 69
46019 Cicognara (MN)
PIVA 01811290202
Tel +39 0375 88.90.91
Fax +39 0375 88.90.80
www.selea.com
infocom@selea.com

- CAMERA PRODUCTION
- SOFTWARE DEVELOPMENT
- INTERNAL RESEARCH & DEVELOPMENT
- 100% MADE IN SELEA

made initaly

